



DDoS 2.0

Jean-Pierre Aerts – Product Management
Grégory Degueudre – Networks

Before we start...



Name
+
Organization

We speak :



Belnet
dedicated connectivity

External Cloud Scrubbing Center



- External scrubbing center since May 2021
- Already activated a few times
- Renewed in 2022



Internal Scrubbing Center – Out of Path



Status?

- RFP is finished
- Solution is defined
- Hardware & Software ordered
- Migrations and Onboarding planned early 2023



Inline – Out of Path Architecture

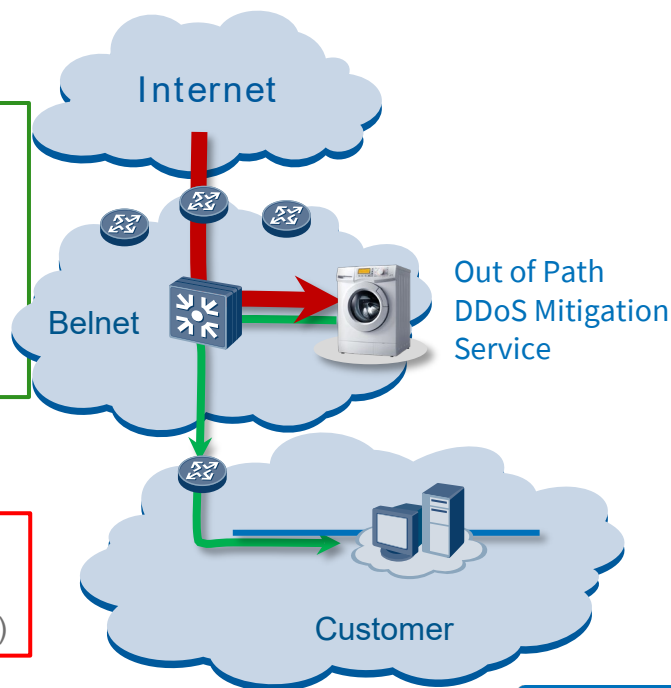
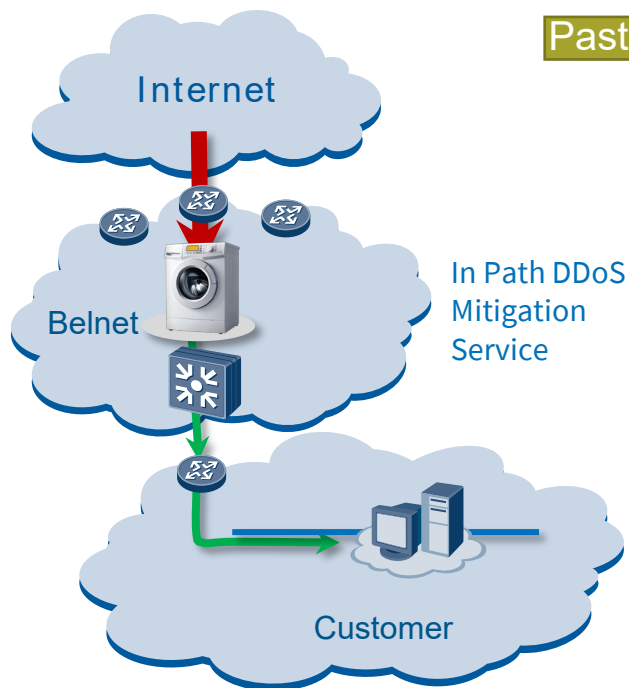


Advantages

- No additional hop
(collocated → min. rerouting)
- Less false positives
- 1 box regular monitoring
→ better for netw. mgt.
(root cause detection)

Disadvantages

- Slightly increased reaction
time (<~ seconds, not minutes)

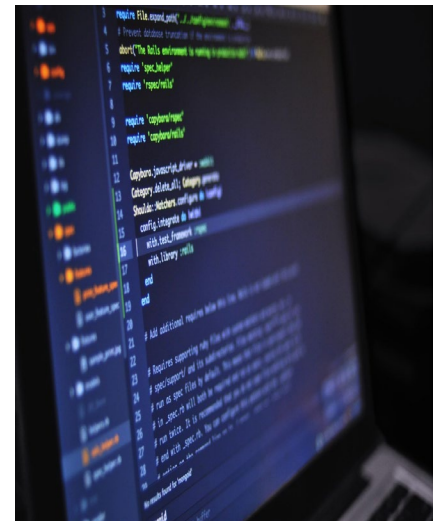


DDoS 2.0



Key Features new DDoS solution

- Protection against volumetric (L3-L4) DDoS attacks.
- Attack detections by constant monitoring of traffic flows.
- Mitigation done “in path” by Belnet routers.
- More complex attack mitigated to Belnet scrubbing centres in Brussels.

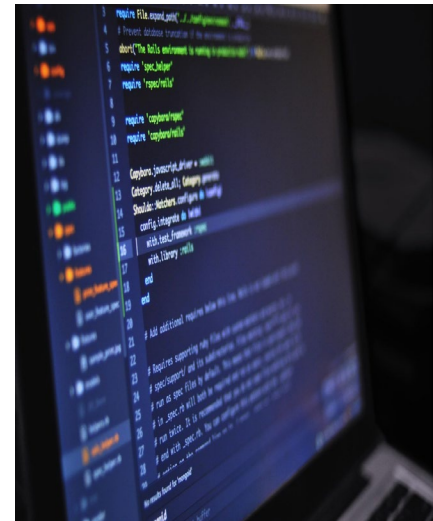


DDoS 2.0



Key Features new DDoS solution

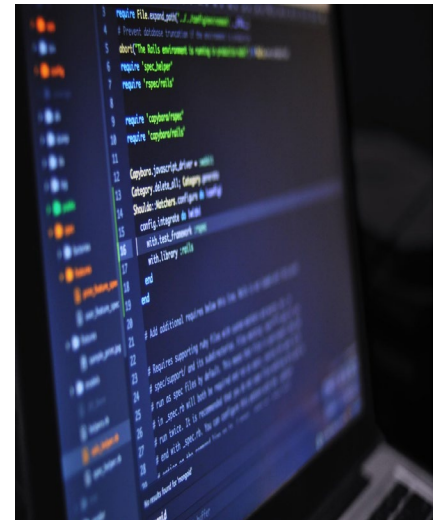
- Very low delay of traffic redirection.
- Time-to-mitigate in a few seconds.
- No extra device “in path” during peace-time.
- Alarms sent when mitigation is triggered.
- Reporting of the mitigation after the attack.
- Historic of attacks being kept for 1 year.



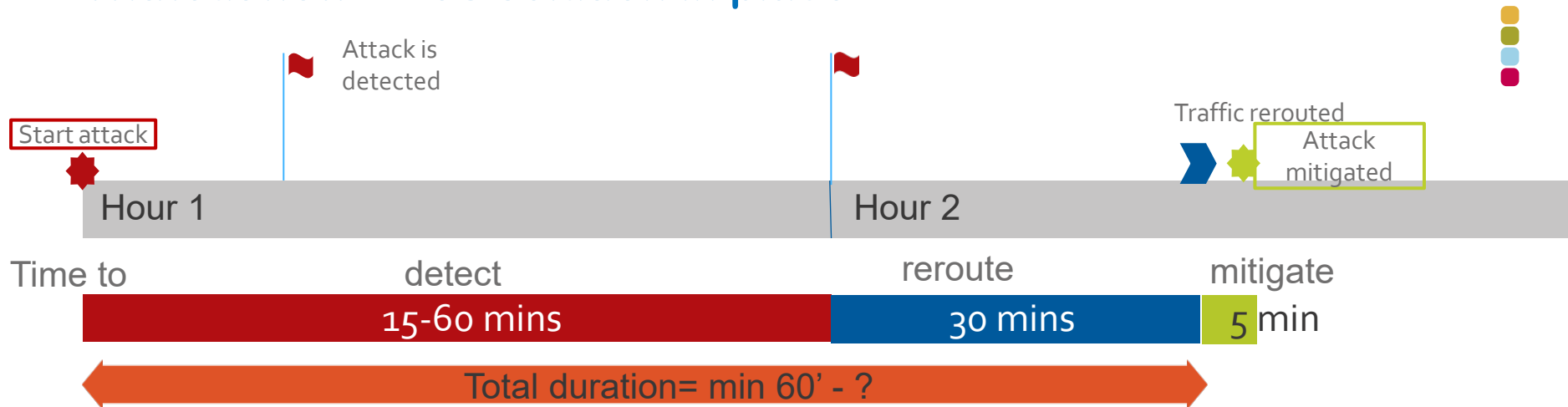
DDoS 2.0 in a nutshell



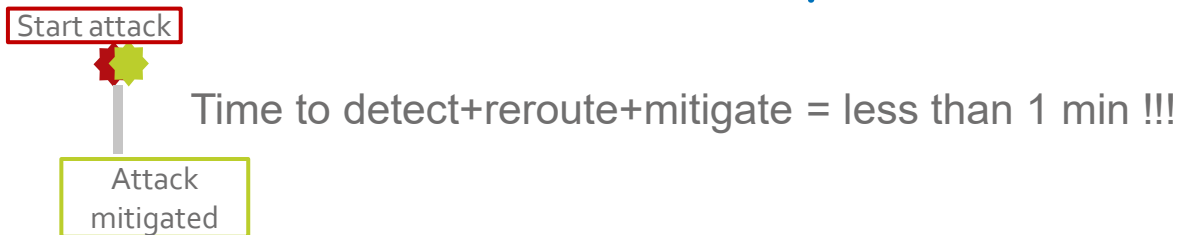
- Internal and external scrubbing center combined for an increased capacity.
- When under attack, little to no impact for end users.
- External scrubbing with some F7 protection.
- Real-time alerts.
- Full reporting after an attack.
- Self-Service dashboard optional.
-



Without new DDoS solution in place



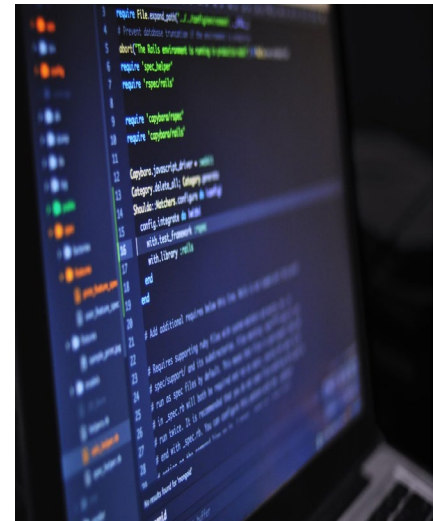
With new DDoS solution in place



DDoS 2.0- Pricing



- Current pricing cannot be maintained.
- New pricing is not confirmed yet.
- Un-protected customers under attack will pay exceptional DDoS interventions in the future.



A series of thin, white, wavy lines that originate from the bottom right and curve upwards and to the left, creating a sense of motion and flow.

Belnet
dedicated connectivity



Thank you for your attention

Belnet
dedicated connectivity